



# ASPECTA™

CONTOURS

Featuring  **ISO CORE** Technology™



## PROFESSIONAL INSTALLATION MANUAL FOR **ASPECTA CONTOURS TARASCON** MULTILAYER MODULAR PRODUCTS

100% WATERPROOF  
COMMERCIAL FLOATING LUXURY VINYL FLOOR

Revised 12/15/2019

This document supersedes all printed and electronic installation documents previously distributed for Aspecta Contours multilayer modular products.





## GET TO KNOW ASPECTA™ MULTILAYER MODULAR PRODUCTS FEATURING ISOCORE TECHNOLOGY™

- Aspecta multilayer modular products are intended for interior commercial use only and are suitable for above-grade, on-grade and below-grade applications. However, Aspecta should not be installed in locations where the substrate beneath the building structure is exposed to the elements.
- Aspecta multilayer modular products are to be installed as a floating floor system and must be free to move as a whole sheet in response to changes in temperature. It must not be glued, nailed, or fastened to the substrate, walls or fixed to any part of the building structure. Install permanent fixtures such as walls, partitions, shelving, cabinets, displays, counters, tracks for transition profiles and similar items first, then fit Aspecta around them, leaving a space for expansion and contraction. Fill expansion spaces around potentially wet areas with premium waterproof 100% silicone sealant. Always remove standing water, pet urine and other liquids promptly.
- Direct sunlight may cause Aspecta multilayer modular products to fade or to expand, causing the floor to buckle or separate. Protect Aspecta from direct sunlight using window treatments or UV tinting on windows. Aspecta multilayer modular products are not recommended for use in sunrooms.
- Aspecta multilayer modular flooring is a waterproof floating floor, but it should not be used to seal an existing floor from moisture. It cannot inhibit the growth of mold or prevent structural problems associated with, or caused by flooding, excessive moisture, alkalis in the substrate, or conditions arising from hydrostatic pressure. Regardless of location, always remove standing water, urine and other liquids promptly. *Jobsite moisture issues must be addressed and corrected prior to installation.*





**ASPECTA**  
**CONTOURS**  
Featuring  **ISO CORE** Technology™

# PRE-INSTALLATION ESSENTIALS

*Your job will be smooth, fast and easy when you follow the essentials every time you install Aspecta multilayer modular flooring featuring ISOCORE Technology.*

## EVALUATE THE JOB SITE

### EXTERIOR

*Damage caused by water and high humidity should be addressed prior to installing Aspecta multilayer modular flooring.*

- Examine the driveway, parking areas and landscaping surrounding the building. Be sure that they slope and direct water away from the foundation.
- Inspect gutters, down spouts and drains for blockage. Remove clogs caused by leaves, dirt and debris, allowing runoff to flow freely away from the foundation.
- Check crawl spaces for cross-ventilation air vents equaling at least 1.5% per 100 square feet (9.3 square meters) of floor space. Crawl spaces should measure a minimum of 18 inches (46.0 cm) high and should be insulated according to the latest building code requirements. The ground should be covered with a minimum 6-mil vapor barrier.

### INTERIOR

*Jobsite moisture issues must be addressed and corrected prior to installation.*

- Examine the installation site for leaky plumbing, including leaks from water heaters, wet bars, soda fountains, or any other water-bearing fixtures or pipes.
- Inspect substrates for levelness. They must be clean, smooth, dry, structurally sound, and flat within  $\frac{3}{16}$ " (5.0mm) within a 10-foot (3.0 meters) radius. The substrate should not slope more than 1 inch (25.0mm) per 6 feet (1.8 meters) in any direction.
- Aspecta requires testing of concrete substrates for moisture and pH before installing Aspecta multilayer modular flooring. Test results should not exceed 85% relative humidity (RH). The Calcium Chloride Test for moisture should be no more than 8 lbs per one-thousand square feet in 24 hours MVER (Moisture Vapor Emission Rating), and pH tests for alkalinity levels should register between 7 and 9.
- Aspecta requires testing of wood substrates for moisture. Obvious signs of moisture issues include warping, peaking, degradation of the integrity of the substrate, rusted fasteners, and rusted floor registers. Even if obvious signs are not present, the material should be tested using a professional moisture meter; moisture levels should not exceed 14%.

**ATTENTION:** Mold and mildew grow only in the presence of moisture. Jobsite moisture issues must be addressed and corrected prior to installation. Please visit [www.epa.gov/mold](http://www.epa.gov/mold) for information about safely preventing and removing mold, mildew and other biological pollutants.

## IDENTIFY YOUR SUBSTRATE

### APPROVED SUBSTRATES

*Aspecta multilayer modular flooring is suitable for use over a wide variety of substrates.*

#### CONCRETE

Aspecta multilayer modular flooring is waterproof, but jobsite moisture issues must be corrected before installation begins to prevent serious damage to the substrate and surrounding structure, and to discourage the growth of mold and mildew. Concrete substrates should be prepared in accordance to the most current version of ASTM F710 (Standard Practice for Preparing Concrete Floors to Receive Resilient Flooring). Concrete substrates must be clean, smooth, dry, structurally sound, and flat within  $\frac{3}{16}$ " (5.0mm) within a 10-foot (3.0 meter) radius. The substrate should not slope more than 1 inch (25.0mm) per 6 feet (1.8 meters) in any direction. Moisture and alkalinity tests should be performed on all concrete substrates regardless of grade level or age of slab. Perform either ASTM F2170 In-Situ Relative Humidity (RH) test or ASTM F1869 Calcium Chloride Moisture Test (MVER: Moisture Vapor Emission Rating). Perform pH test per ASTM F710 to determine alkalinity of the slab. RH Test results should not exceed 85% relative humidity. The Calcium Chloride Test for moisture should measure no more than 8lbs per one-thousand square feet in 24 hours MVER, and pH tests for alkalinity levels should register between 7 and 9. Electronic meter testing is not considered a replacement for a Calcium Chloride Test or Relative Humidity Test. All moisture tests should be conducted prior to installation to ensure that moisture is at recommended levels. Follow current ASTM F710 guidelines. Aspecta highly recommends that substrate moisture and pH testing are conducted by an ICRI (International Concrete Repair Institute) tier 2 certified technician.

#### RADIANT HEAT

Radiant heating systems must be cast  $\frac{1}{2}$ -inch (12.7mm) below the surface of the concrete slab, and should be operating at least 2 weeks before installing Aspecta multilayer modular flooring. Set the temperature of the radiant heating system to 68°F (20°C) 48 hours before, during, and 72 hours after installation. The temperature of the radiant heat floor may be increased gradually 72 hours after installation, but the surface temperature should never exceed 85°F (29°C). Contact the manufacturer of your radiant heating system for further recommendations.

#### PLYWOOD, OSB, PARTICLEBOARD & CHIPBOARD

Wood substrates must be A.P.A. approved with a minimum grade of "BB" or "CC". They must be clean, smooth, dry, structurally sound, and flat within  $\frac{3}{16}$ " (5.0mm) within a 10-foot (3.0 meters) radius. The substrate should not slope more than 1 inch (25.0mm) per 6 feet (1.8 meters) in any direction. Aspecta recommends performing moisture tests prior to installation to prevent serious damage to the substrate and surrounding structure, and to discourage the growth of mold and mildew. Moisture readings should never exceed 14% for plywood, OSB, particleboard and chipboard substrates. If moisture readings exceed 14%, it is advisable to correct moisture issues at the jobsite before installing



# ASPECTA<sup>™</sup>

## CONTOURS

Featuring  ISO CORE Technology<sup>®</sup>

Aspecta multilayer modular flooring.

### TILE, TERRAZZO, ASBESTOS TILE, RESILIENT TILE, NON-CUSHION SHEET VINYL, AND METAL

Existing floors must be firmly attached to the structural floor. In order to prevent vertical deflection (movement) and potential damage to the integrity of the Aspecta multilayer modular flooring, all substrates must be sturdy, sound, and flat within  $\frac{3}{16}$ " (5.0mm) within a 10-foot (3.0 meters) radius. The substrate should not slope more than 1 inch (25.0mm) per 6 feet (1.8 meters) in any direction. Fill in grout lines on ceramic tiles, terrazzo, quarry tiles and similar floors with cementitious patching compound.

## NON-APPROVED SUBSTRATES

*Remove the floors noted below and remove old adhesive before installing Aspecta multilayer modular flooring. Encapsulate adhesive and cutback residue.*

- Carpeting/Carpet Pad
- Cushion Back Sheet Vinyl
- Engineered Hardwood Over Concrete
- Floating Floors
- Hardwood Over Concrete
- Parquet Over Concrete
- Sleeper Substrates

**NOTE:** Various Federal, State and Local government agencies have established regulations governing the removal of in-place asbestos-containing material. If you contemplate the removal of a resilient floor covering structure that contains (or is presumed to contain) asbestos, you must review and comply with all applicable regulations. Do not sand, dry sweep, dry scrape, drill, saw, bead blast, or mechanically chip or pulverize existing resilient flooring, backing, lining felt, asphalt "cut-back" adhesive, or other adhesive. These products may contain asbestos fibers and/or crystalline silica. Avoid creating dust. Inhalation of such dust is a cancer and respiratory tract hazard. Smoking by individuals exposed to asbestos fibers greatly increases the risk of bodily harm. Unless positively certain that the product is a non-asbestos containing material, you must presume it contains asbestos. Regulations may require that the material be tested to determine asbestos content. The RFCI's Recommended Work Practices for Removal of Resilient Floor Covering are a defined set of instructions addressed to the task of removing all resilient floor covering structures. For further information, visit the Resilient Floor Covering Institute website at [www.rfci.com](http://www.rfci.com)

## PREPARE THE JOB SITE

*Careful preparation is the key to outstanding results. All Trades Must Finish Before Installing Aspecta multilayer modular flooring.*

- **Install Permanent Exterior Doors and Windows**
- **Turn on HVAC at Least One Week Prior to Installation** - Room temperature should be maintained between 50°F - 100°F (10°C - 38°C) at least 48 hours prior to installation.

- **Allow all other Trades to Finish**
- **Perform Recommended Moisture and pH Tests** - See the "Identify Your Substrate" section of this manual (pages 3-4) for further information about suggested tests.
- **Qualify and Prepare the Substrate** - All substrates must meet all minimum standard building codes. Fill large cracks and voids with cementitious patching compound. In order to prevent vertical deflection (movement) and potential damage to the integrity of the Aspecta flooring, all substrates must be clean, smooth, dry, structurally sound, and flat within  $\frac{3}{16}$ " (5.0mm) within a 10-foot (3.0 meters) radius. The substrate should not slope more than 1 inch (25.0mm) per 6 feet (1.8 meters) in any direction.
- **Remove Wall Base Moldings** - Remove wall base moldings prior to installation. Leave appropriate expansion space between the edge of the flooring and walls or vertical surfaces.
- **Fill Grout Lines** - Fill grout joints when installing over existing ceramic tile or stone floors to obtain a smooth surface. Follow Substrate Flatness Tolerances per chart on page 5.
- **Remove Non-approved Substrates**
- **Remove or Encapsulate Old Adhesive** - Old adhesives must be scraped up and left so that no ridges or puddles are evident and all that remains is a thin, smooth film. Then, encapsulate residue.
- **Undercut Wood Door Casings** - Wood door casings should be undercut so that Aspecta flooring will fit neatly beneath them, concealing the expansion space.
- **Cut Around Metal Door Casings** - Do not cut metal door casings. Cut Aspecta flooring around them, leaving the appropriate expansion space. After installation, fill the space with a coordinating premium waterproof 100% silicone sealant.
- **Clean Up the Job Site** - Remove all debris, sweep and vacuum the substrate. Smooth, non-porous floors should be damp-mopped after vacuuming and allowed to dry thoroughly before installing Aspecta multilayer modular flooring. All dust must be removed prior to installation.

## CHECK RUN NUMBERS AND MANUFACTURE DATE

Locate the run number on the short end of each carton and verify that all of the material for your job is from the same run. Minor shade variations within the same run number contribute to the natural look of Aspecta flooring. To avoid noticeable shade variations, do not install material from different runs across large expanses.

To determine manufacture date, locate the run number on the short end of the carton. It is the eight-digit number separated by decimal points. Examples:

### Run Number/Manufacture Date

29.10.2018

DAY.MONTH.YEAR

### Run Number/Manufacture Date

2018.29.10

YEAR.DAY.MONTH



## KEY INSTALLATION CONSIDERATIONS

<b>Substrate Flatness Tolerances</b>	3/16" (5.0mm) in 10' (3.0 meters) Slope no more than 1" (25.0mm) in 6' (1.8 meters)
<b>Vapor Barrier (6 mil polyfilm)</b>	Not Required
<b>Is underlayment (pad) required</b>	No – Aspecta multilayer modular flooring includes an integral pre-attached pad
<b>Acclimation Requirements</b>	48 hours*
<b>Transition Requirements (T-Mold) for Large Spaces</b>	Required in rooms greater than 100' (30.5 meters) in either direction
<b>Transition Requirements (T-Mold) Doorways/Thresholds</b>	Required
<b>Installation Over Existing Ceramic Tile Floor</b>	Filling grout lines required, follow Substrate Flatness Tolerances
<b>Glue Down Installation</b>	Not Required/Not Recommended
<b>Substrate RH/MVER Recommendations</b>	85% RH/8 lbs MVER
<b>Radiant Heat</b>	Approved – Substrate surface temp. not to exceed 85°F (29°C)
<b>3-Season/Non-Climate Controlled Environments</b>	Not Recommended
<b>Perimeter Expansion Requirements</b>	3/8" (9.5mm) around perimeter walls, pipes, & heavy fixed objects such as cabinetry**
<b>Allowable Interior Environmental Conditions</b>	50°F - 100°F (10°C - 38°C) / 40% - 60% RH
<b>Definition of "Waterproof"</b>	Structural integrity of flooring will not degrade due to contact with moisture/water***

\*While Aspecta multilayer modular flooring is more dimensionally stable than typical floating wood or vinyl based flooring products, acclimation is still required. Aspecta multilayer modular flooring subjected to extreme hot or cold conditions can cause the material to become too flexible or rigid, making the material difficult to install and potentially causing damage to the locking system. Optimum material and building temperature range for installation is 50°F - 100°F (10°C - 38°C).

\*\*If installing Aspecta multilayer modular flooring in an environment that has a length greater than 100' (30.5 meters), a T-Molding should be utilized to separate the floor into two (2) separate sections.

\*\*\*Although Aspecta multilayer modular flooring is waterproof, it is not intended for use as a moisture mitigation system.

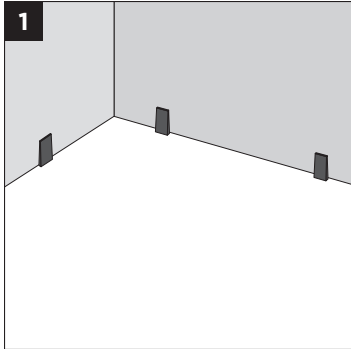
**WARNING:** Only installation techniques described in this installation manual are warranted. Aspecta does not warrant Aspecta multilayer modular flooring installations involving custom cutting, such as 45-degree mitered corners and serpentine edges. Please refer to the product warranty for complete warranty details and exclusions.

# INSTALLATION FOR ASPECTA CONTOURS TARASCON (BASKETWEAVE) MULTILAYER MODULAR FLOORING WITH DROPLOCK100

Installation will move from left to right beginning in the left corner with tongue side of long edge facing the wall.

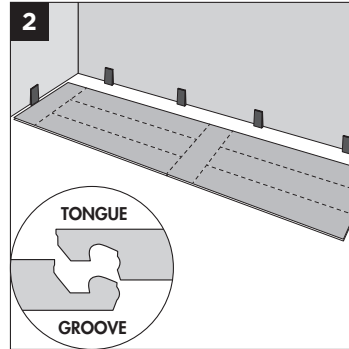


**ASPECTA**  
CONTOURS  
Featuring **ISOCORE** Technology™



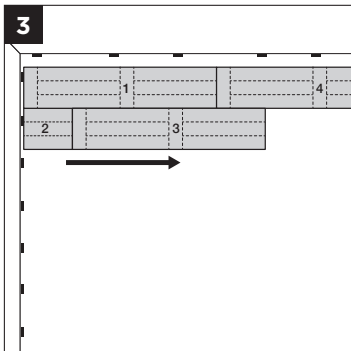
## SET SPACERS

Create the required expansion space between the perimeter planks and the wall using spacers. Place spacers equaling the thickness of the required expansion between plank and wall on short and long ends of plank. Do not remove the spacers until the installation is complete.



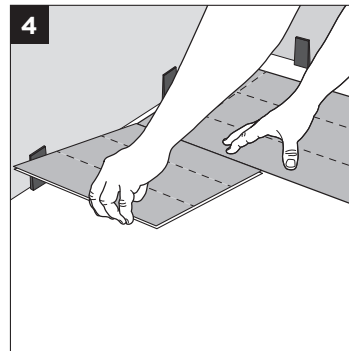
## INSTALL FIRST PLANK

Position the first plank against a spacer a few inches from the starting wall with the tongue side of the long edge facing the wall.



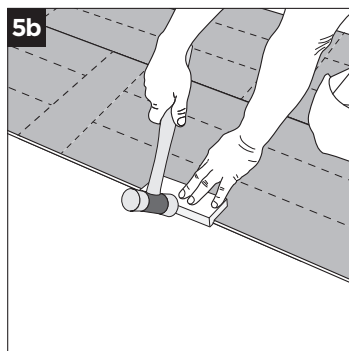
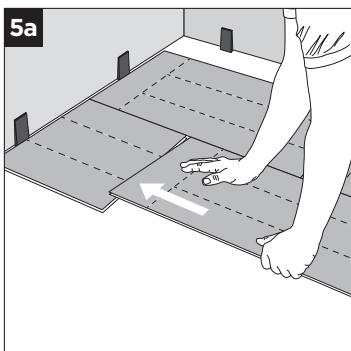
## ESTABLISH PROPER STAGGERING

Maintain an end-joint stagger equal to  $\frac{1}{4}$  the length of a full plank from row-to-row throughout the entire installation. The installation of the first two rows will continue: alternating back and forth between rows one and two, for the first two rows only.



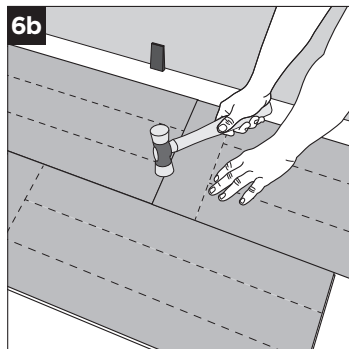
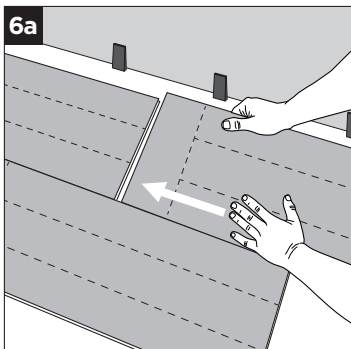
## FIRST PLANK, SECOND ROW

Cut the first plank in the second row to the length that creates a proper  $\frac{1}{4}$  plank stagger between rows. Insert the long tongue edge of the plank into the long groove edge of the first plank. Make sure there are no gaps. Tap along the long groove edge using the Prevail Tapping Block to protect groove edge.



## SECOND PLANK, SECOND ROW

Insert the long side, positioning the plank, so the short tongue touches the short groove edge on the first plank of the second row. Engage the joint by tapping the long edge of the plank using the Prevail Tapping Block and tap the short joint with a lightweight soft-faced hammer.



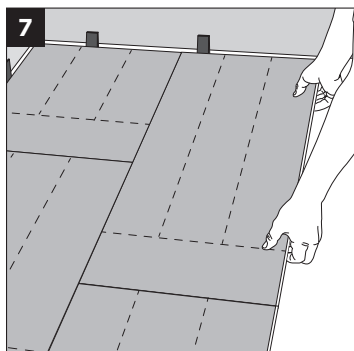
## SECOND PLANK, FIRST ROW

Select a full plank and position the long groove edge into the tongue of the second plank in the second row. Engage, tap and press as before. Repeat the same installation pattern until you reach the opposite wall and cannot install another full plank.

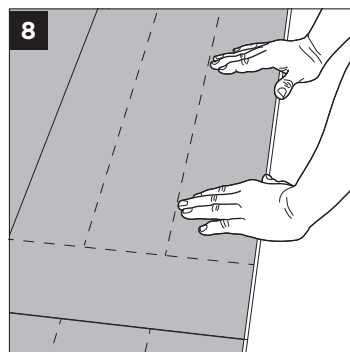
# INSTALLATION FOR ASPECTA CONTOURS **TARASCON** (BASKETWEAVE) MULTILAYER MODULAR FLOORING WITH **DROPLOCK100**



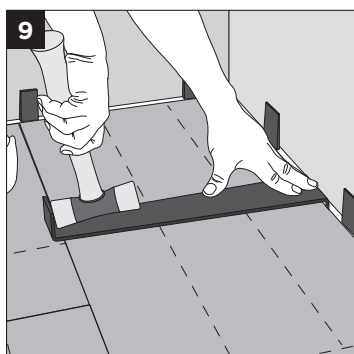
**ASPECTA**  
CONTOURS  
Featuring **ISOCORE** Technology™



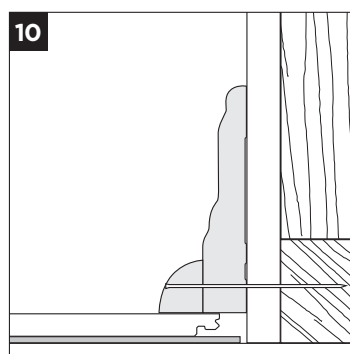
**7** **INSTALL THE LAST  
PIECES OF ROWS 1 & 2**  
Cut to fit, maintaining the expansion  
gap. Install as before. Move the  
entire assembly against the spacers  
on the starting wall.



**8** **INSTALL REMAINING  
ROWS**  
Install the remaining material, one  
row after the other. Always engage  
long side joints with tapping block  
before tapping down short joint  
using soft faced hammer. Maintain  
the required stagger throughout the  
install.



**9** **INSTALL THE LAST ROW**  
Cut the final row of planks to fit  
along the wall. Use a pull bar to lock  
the long edges together. Do not use  
the pull bar on the short edges.



**10** **FINISH THE JOB**  
Remove spacers. Cover expansion  
space with quarter round or other  
trim, being sure not to trap or pin  
down the floor.





**ASPECTA**  
CONTOURS  
Featuring  **ISO CORE** Technology™

## GENERAL CARE & MAINTENANCE

### ROUTINE CARE & MAINTENANCE

- Sweep, dust mop or vacuum daily. Do not use vacuums with any type of beater bar assembly.
- Lightly damp mop with Prevail™ Neutral Cleaner. Remove excess soil by carefully scrubbing with a soft nylon brush or magic eraser sponge and Prevail Neutral Cleaner.
- Remove scuffs using Prevail Neutral Cleaner and a soft nylon brush or magic eraser sponge.
- Heavily soiled floors may require an occasional deep cleaning using Prevail Neutral Cleaner, spray bottle and a low-speed buffer not exceeding 175 RPM. Fit the buffer with a red or white scrubbing pad, spray the cleaner solution onto a manageable area of the floor and scrub. Remove the dirty residue by damp mopping with clear water. **Caution:** Do not flood the floor.
- Remove standing water, pet urine and other liquids promptly. Follow with Prevail 1-Step Neutral Cleaner or Prevail Ready to Use Neutral Cleaner.

**Notes: Stain Removal** - To remove stubborn spots and stains from Aspecta floors, always begin with mild cleaners, such as Prevail 1-Step Neutral Cleaner. If such cleaners fail to remove the spots and stains, and "if permitted," use mineral spirits. Do not use harsh solvents, such as lacquer thinner or straight acetone, as these can permanently soften and damage the vinyl surface.

For stubborn spots and stains (such as paints, permanent markers, and dyes), and "if permitted," try applying fingernail polish remover containing acetone (do not use straight acetone) to a soft cloth and rubbing across the affected areas. Subsequent to this cleaning procedure for stubborn spots and stains, please clean the affected area with clear water to remove any residue. Any damage resulting from the use of pure solvents IS NOT covered by the Aspecta Warranty. Always test stronger cleaning agents on sample pieces or in unnoticeable areas, first.

Never use a brush or pad more aggressive than a 3M red equivalent. Blue, Green, Brown and Black pads will damage the surface of the floor.

### PREVENTIVE CARE

- Use non-staining walk-off mats at all outside entrances.
- Use flat glides at least 2" (50mm) in diameter under furniture legs or free standing displays and fixtures to prevent indentations and scratches.
- Use broad surface non-staining casters at least 2" (50mm) in diameter on rolling fixtures or furniture.
- Do not use vinegar, polishes, waxes, oil soaps, abrasive cleaners, harsh detergents, "mop and shine" products or solvents.
- Do not expose to direct sunlight for prolonged periods.
- Do not use steam cleaners.
- Do not flood floor or subject to standing liquids, including pet urine.



**ASPECTA**  
A NEW DIMENSION IN FLOORING

For further information, inquiries and troubleshooting please contact:  
Aspecta Customer Service Monday to Friday, 8:00 a.m. to 5:00 p.m. CST at **(855) 400-7732**  
or visit our website at **[www.aspectaflooring.com](http://www.aspectaflooring.com)**.



# COMMERCIAL WARRANTY

EFFECTIVE: DECEMBER 1, 2019



## PRODUCTS & COVERAGE

Aspecta North America LLC ("Aspecta N.A.") warrants that its Aspecta™ CONTOURS flooring will be free from manufacturing defects and, under normal use and maintenance, will not wear out through the original decorative pattern, and the structural integrity of the flooring itself will not be materially impaired by Water Damage as hereafter defined, for 20 years from the date of purchase. "Water Damage" covers structural-integrity damage to the flooring itself after water exposure in standard conditions (does not cover flooding). This Limited Warranty only applies provided the flooring covered by this warranty is installed and maintained according to the **Aspecta Multilayer LVT Professional Installation Manual**.

## PRE-INSTALLATION

Aspecta N.A. warrants that its flooring is free of visual defects. You and/or your installer should carefully inspect each piece before installation. Any pieces that appear to have defects should not be installed. Aspecta N.A. will not be responsible for any claim for flooring installed with visual defects.

## INSTALLATION

Aspecta N.A. does not warrant flooring installers' workmanship. Installation errors should be addressed to the flooring contractor who installed the Aspecta CONTOURS flooring. Aspecta CONTOURS floors should be installed by professional flooring contractors with experience and demonstrated expertise in installing commercial floors of similar size and complexity. This Limited Warranty covers materials and fair market rate installation costs as set forth below, provided that such flooring is installed according to the **Aspecta Multilayer LVT Professional Installation Manual**. All instructions contained in the current manual must be followed when installing Aspecta CONTOURS, or this warranty will be voided. This manual is revised periodically and floors must be installed according to the current manual at the time of installation. Please check our website for the current manual.

## REPLACEMENT/REPAIRS

Aspecta N.A. reserves the right to repair any flooring and/or to use its own source to obtain an installer for replacement flooring. If Aspecta N.A. repairs or replaces any flooring as a result of a warranty claim, you will be required to clear, at your own expense, any items placed over the affected areas subsequent to the original installation. In the event that Aspecta N.A. repairs or replaces any flooring covered under this Limited Warranty, this Limited Warranty shall remain in effect with respect to such flooring for a period limited to the remaining eligible duration of the original Limited Warranty.

## TERMS FOR WARRANTY

If a defect covered by this Limited Warranty is found within the warranty period and promptly reported in writing to Aspecta N.A. within a specified time from the date of purchase in accordance with the chart below, Aspecta N.A. will supply new flooring material of similar color, pattern and quality to replace the defective area. Aspecta N.A. will also pay a percentage of fair market labor costs in accordance with the chart below. Aspecta N.A. will not pay any labor costs after ten years from the date of purchase.

PERIOD (YEARS)	1	2	3	4	5	6	7	8	9	10	11-20
MATERIAL	100%	100%	100%	100%	100%	100%	100%	100%	100%	100%	100%
LABOR	100%	90%	80%	70%	60%	50%	40%	30%	20%	10%	0%

In case of questions regarding the terms of this Limited Warranty, please contact our Aspecta Customer Service Department at (855) 400-SPEC. Aspecta N.A. reserves the right to inspect any flooring, request samples, secure photographs or any other information as may be required to ascertain the nature of any claim under this Limited Warranty.

## EXCLUSIONS

The following are not covered by this Limited Warranty:

- Dissatisfaction or damage due to improper installation or maintenance, including use of improper cleaning solutions or finishes, unevenness or irregularities. Refer to the **Aspecta Multilayer LVT Professional Installation Manual** for more details.
- Damage caused by fire, burns, abuse, flooding, mildew, spills, scratches, abrasive scouring pads, scuffing, staining, construction or installation.
- Damage caused by vacuum cleaner beater bar, indentations or damage caused by spiked heeled shoes, improper rolling loads, castor wheels, chairs or other furniture without proper floor protectors and cuts from sharp objects.
- Changes in color or sheen from exposure to sunlight or due to use of rubber-backed mats.
- Exterior applications.
- Loss of gloss.
- Minor shading, color or texture differences between samples or printed color photographs or illustrations and delivered product.
- This flooring should not be used to seal an existing floor from moisture. It is a floating floor which is waterproof, but this flooring cannot prevent problems associated with or caused by flooding, excessive moisture or alkalis in the subfloor or conditions arising from hydrostatic pressure.
- This Limited Warranty is void if, prior to installation, this flooring is not acclimated to room temperature (between 50°F - 100°F / 10°C - 38°C) at the job site for a minimum of 48 hours and, if post-installation, such flooring is not continuously maintained at such temperatures.
- Only installation techniques described in the **Aspecta Multilayer LVT Professional Installation Manual** are warranted. Aspecta N.A. does not warrant Aspecta CONTOURS installations involving custom cutting, such as 45-degree mitered corners and serpentine edges. Aspecta N.A. does not warrant Aspecta CONTOURS installations in which the flooring is adhered (glued) to the substrate, as Aspecta CONTOURS is a floating floor.
- Loss due to loss of time, inconvenience, incidental expenses (such as telephone calls, labor and/or materials) incurred in the removal or reinstallation of the affected material, and any other incidental or consequential damages.

Some states do not allow the exclusion or limitation of incidental or consequential damages, so that the above limitations and exclusions may not apply. Your warranty gives you specific legal rights, and you may have other legal rights, which vary from state to state.

This warranty is in lieu of any other warranties, express or implied. Please keep your receipt or obtain it from the original purchaser. Aspecta N.A. requires the receipt in order to verify date of purchase to help resolve any problems.

## WARRANTY OWNER

This warranty applies only to the original purchaser of first quality flooring and the original installation site, but may be transferable one-time only upon a change in ownership of the installation site. Any request for transferability of this warranty must be made in writing to Aspecta N.A. by the new owner of the installation site. Aspecta N.A. reserves the right to inspect the installation site upon request for a one-time transfer of this warranty. Transferability of this warranty will be voided if any modification has been made to the flooring by the original owner of the installation site or will be made by the new owner or if the new owner intends to use the space of the installation site for a different purpose. In addition, one-time transferability is available only if the new owner agrees in writing to follow the "Care & Maintenance" section of the **Aspecta Multilayer LVT Professional Installation Manual**. Aspecta N.A. will NOT pay any labor costs with respect to a claim under a warranty that has been transferred.

Claims under this Limited Warranty must be made in writing to the following address:

Warranty Department  
Aspecta N.A.  
119 Thomas Street  
Calhoun, GA 30701